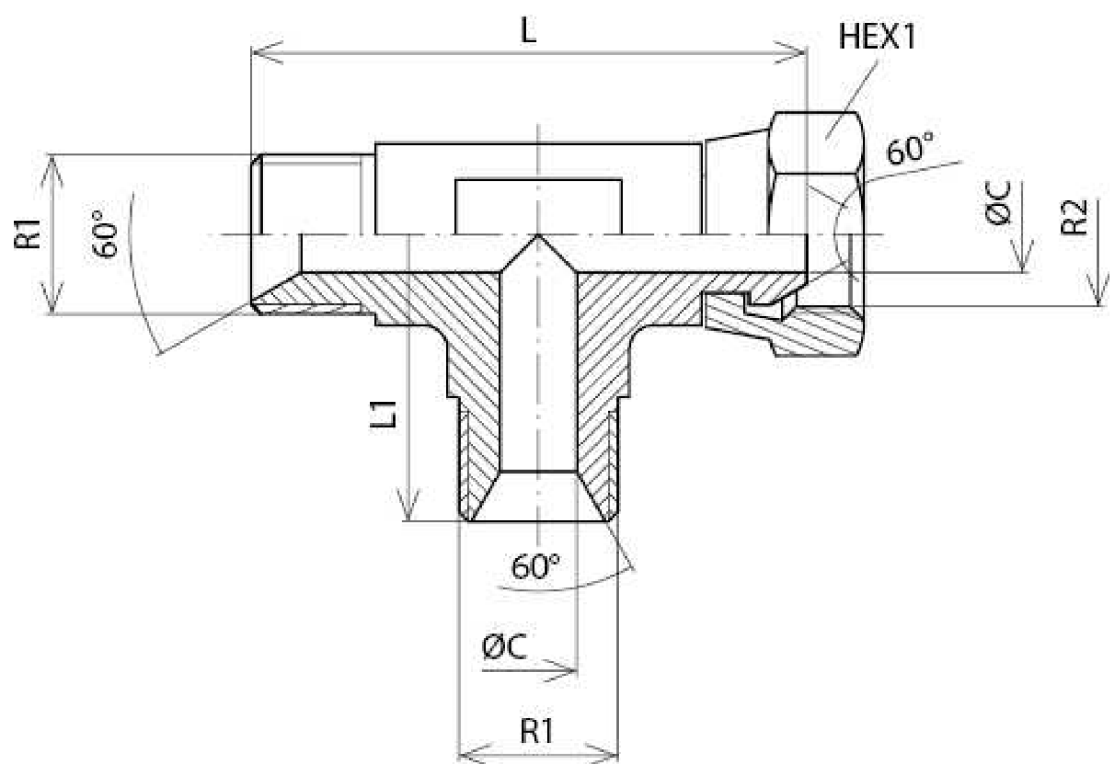


Tee BSP Male-male-swivel female (60°) forge



Part nº	R1	R2	R3	L	L1	HEX 1	CH1
<b>S122302</b>	1/8" BSP	1/8" BSP	1/8" BSP				
<b>S122304</b>	1/4" BSP	1/4" BSP	1/4" BSP	54	27	19	14
<b>S122306</b>	3/8" BSP	3/8" BSP	3/8" BSP	58	29	22	19
<b>S122308</b>	1/2" BSP	1/2" BSP	1/2" BSP	70	35	27	22
<b>S122312</b>	3/4" BSP	3/4" BSP	3/4" BSP	86	43	32	27
<b>S122316</b>	1" BSP	1" BSP	1" BSP	94	47	41	33
<b>S122320</b>	1"1/4 BSP	1"1/4 BSP	1"1/4 BSP	100	50	50	41